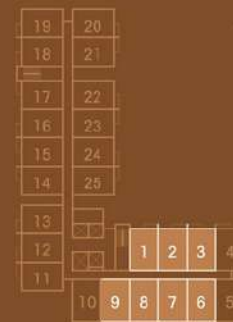


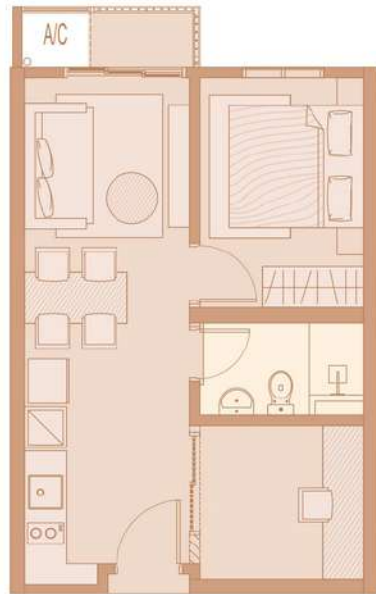
STOREY PLAN - TOWER A



TYPE A

Built-up Area: 450 sq.ft.

Studio
Balcony



STOREY PLAN - TOWER A



12 15 16 17 18 23 24

TYPE A1

Built-up Area: 450 sq.ft.

1+1 Bedroom
Balcony



STOREY PLAN - TOWER A

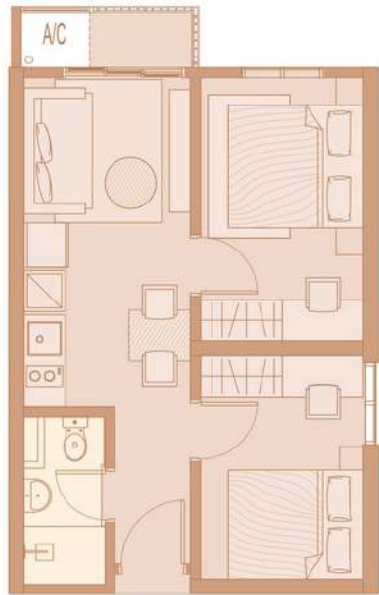


- 4
- 5
- 10
- 11
- 13
- 14
- 25

TYPE A2

Built-up Area: 450 sq.ft.

2 Bedrooms
Balcony



STOREY PLAN - TOWER A



19 20 21 22

TYPE A3

Built-up Area: 450 sq.ft.

2 Bedrooms
Balcony



STOREY PLAN - TOWER B



14

TYPE B

Built-up Area: 617 sq.ft.

2 Bedrooms
Balcony



STOREY PLAN - TOWER B

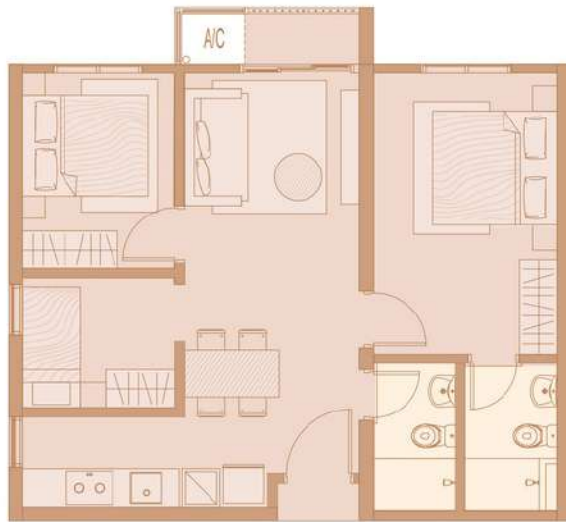


6 7 15

TYPE B1

Built-up Area: 627 sq.ft.

2 Bedrooms
Balcony



STOREY PLAN - TOWER B

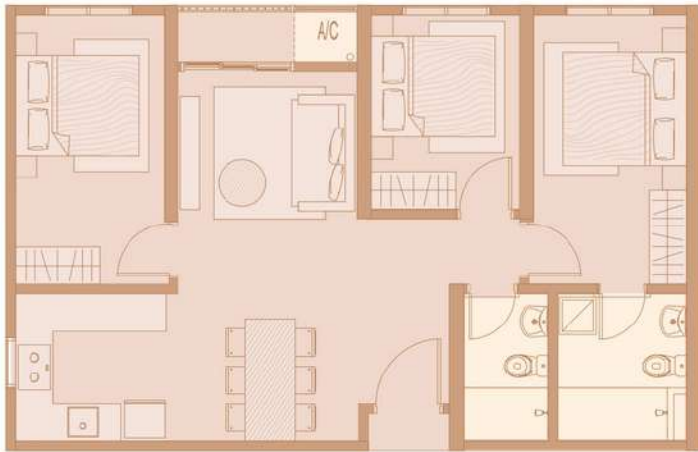


8 13

TYPE B2

Built-up Area: 694 sq.ft.

2+1 Bedrooms
Balcony



STOREY PLAN - TOWER B



11 12

TYPE C

Built-up Area: 815 sq.ft.

3 Bedrooms
Balcony



STOREY PLAN - TOWER B



9 10

TYPE C1

Built-up Area: 827 sq.ft.

3 Bedrooms
Balcony



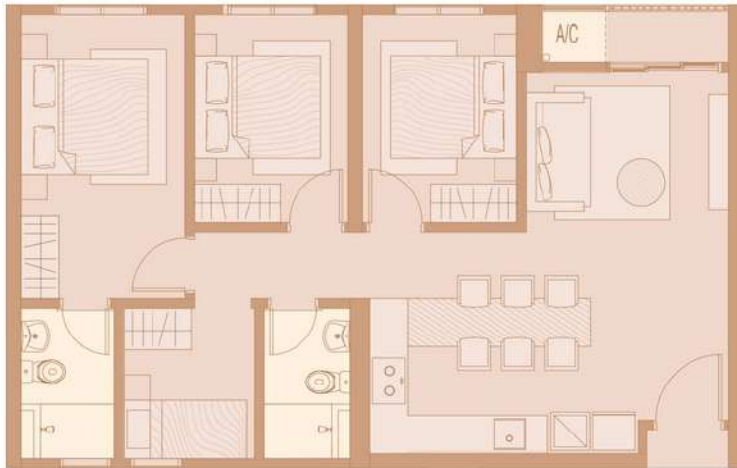
STOREY PLAN - TOWER B



TYPE C2

Built-up Area: 694 sq.ft.

3 Bedrooms
Balcony



STOREY PLAN - TOWER B

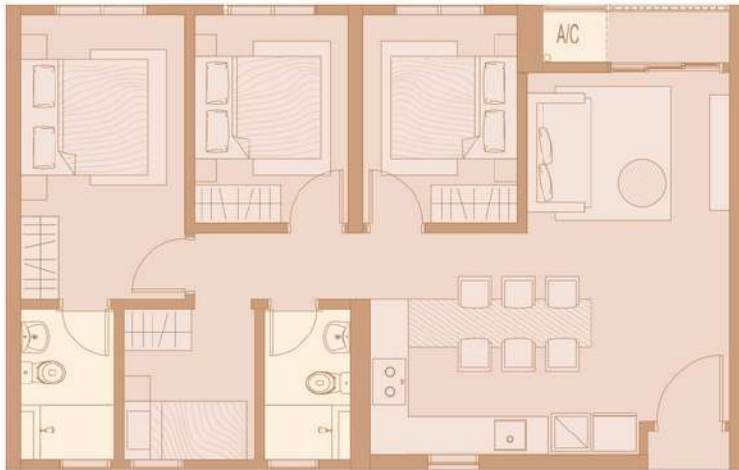


5

TYPE D

Built-up Area: 864 sq.ft.

4 Bedrooms
Balcony



STOREY PLAN - TOWER B

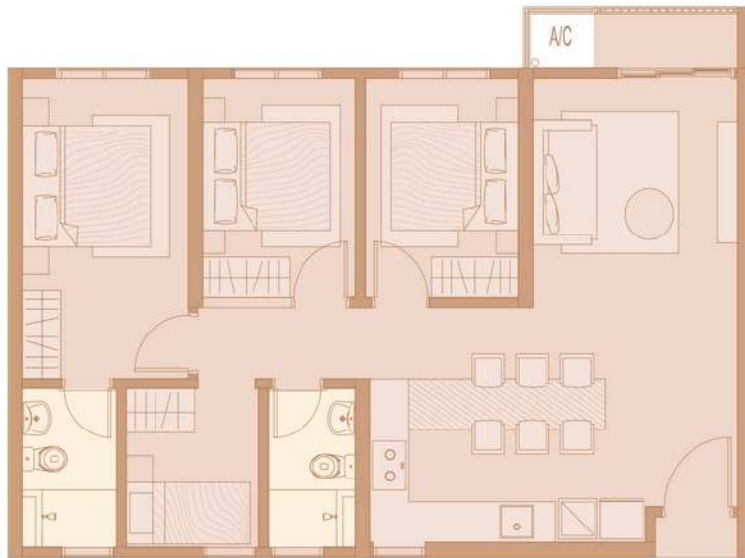


3

TYPE D1

Built-up Area: 864 sq.ft.

4 Bedrooms
Balcony



STOREY PLAN - TOWER B



2

TYPE D2

Built-up Area: 896 sq.ft.

4 Bedrooms
Balcony



STOREY PLAN - TOWER B



16

TYPE D3

Built-up Area: 1,055 sq.ft.

4 Bedrooms
Balcony