

BLOCK B1

TYPE A

FLOOR AREA
UNIT = 1330 ft²



LEVEL 1, 8, 9

BALCONY = 306 ft²
TOTAL FLOOR AREA = 1636 ft²

LEVEL 2, 7, 10

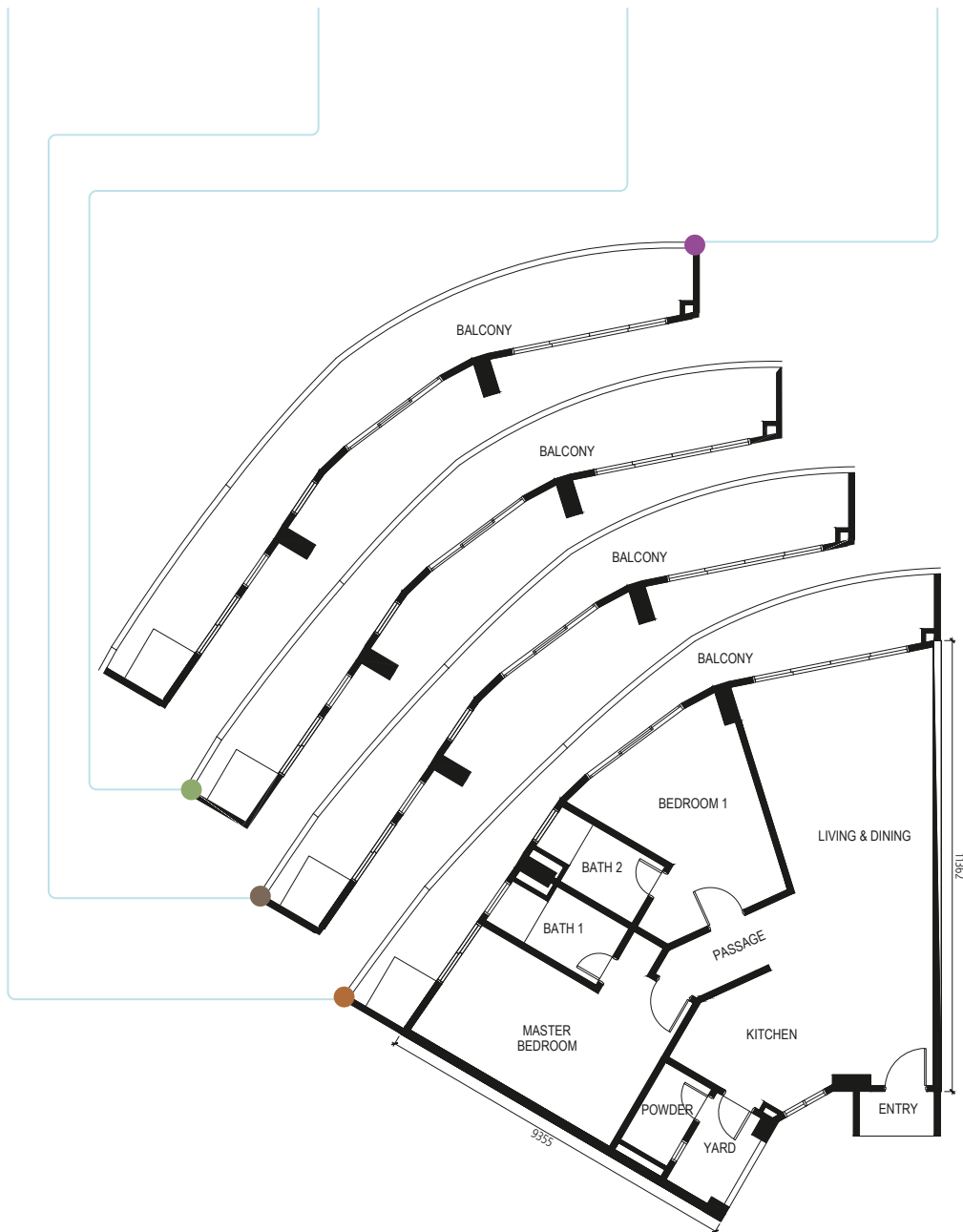
BALCONY = 333 ft²
TOTAL FLOOR AREA = 1663 ft²

LEVEL 3, 6, 11

BALCONY = 360 ft²
TOTAL FLOOR AREA = 1690 ft²

LEVEL 3A, 5

BALCONY = 386 ft²
TOTAL FLOOR AREA = 1716 ft²



Note :
 • Subject to variations, modifications and substitutions as may be required by the Authorities or recommended by Architect or Engineer.
 • Subject to the final survey by the licensed land surveyor.

BLOCK B1

TYPE B

FLOOR AREA
UNIT = 1226 ft²



LEVEL 1, 8, 9

BALCONY = 315 ft²
TOTAL FLOOR AREA = 1541 ft²

LEVEL 2, 7, 10

BALCONY = 304 ft²
TOTAL FLOOR AREA = 1530 ft²

LEVEL 3, 6, 11

BALCONY = 294 ft²
TOTAL FLOOR AREA = 1520 ft²

LEVEL 3A, 5

BALCONY = 286 ft²
TOTAL FLOOR AREA = 1512 ft²



Note : • Subject to variations, modifications and substitutions as may be required by the Authorities or recommended by Architect or Engineer.
• Subject to the final survey by the licensed land surveyor.

B1

TYPE C

FLOOR AREA
UNIT = 1568 ft²



LEVEL 1, 8, 9

BALCONY = 391 ft²
TOTAL FLOOR AREA = 1959 ft²

LEVEL 2, 7, 10

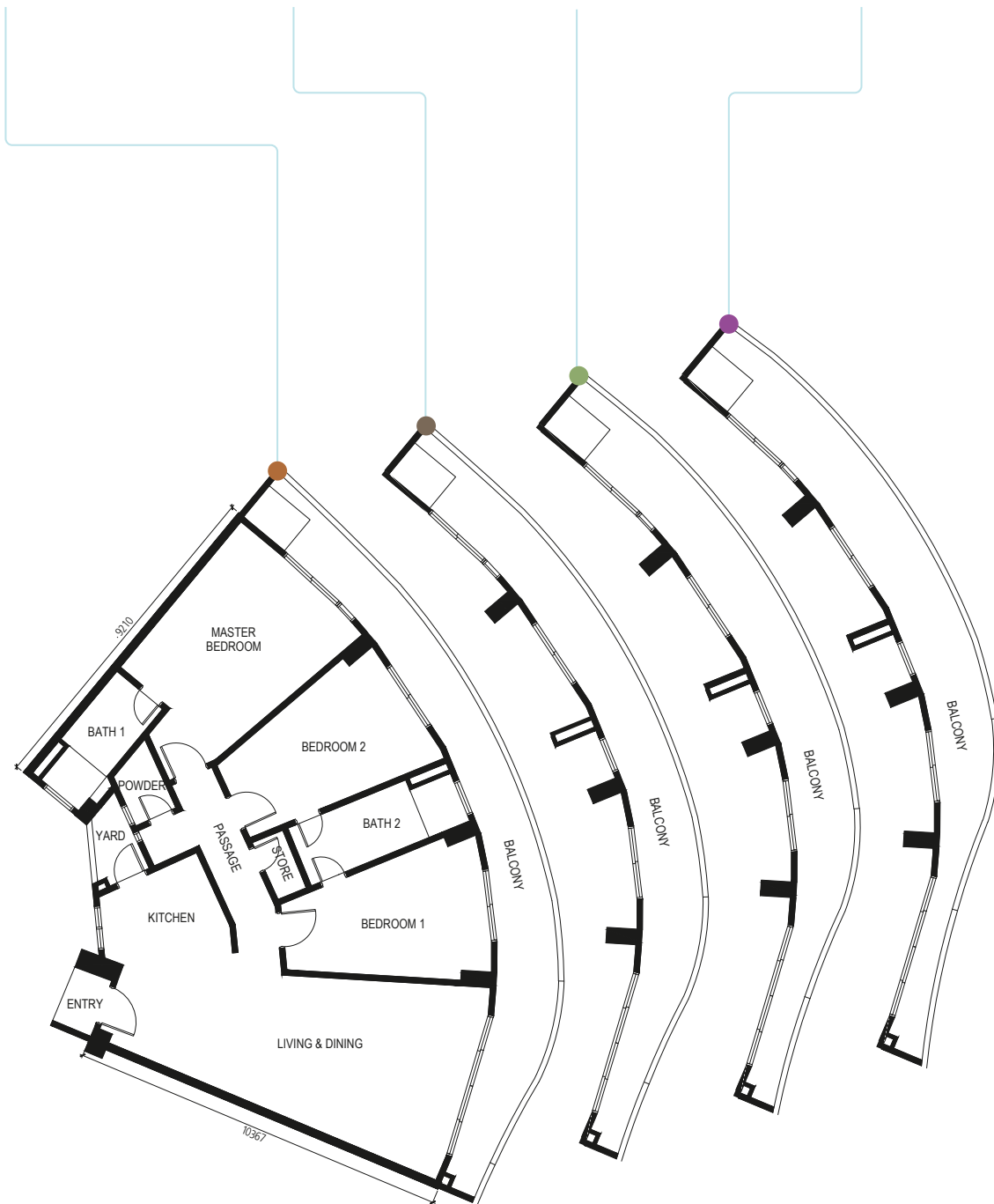
BALCONY = 394 ft²
TOTAL FLOOR AREA = 1962 ft²

LEVEL 3, 6, 11

BALCONY = 398 ft²
TOTAL FLOOR AREA = 1966 ft²

LEVEL 3A, 5

BALCONY = 401 ft²
TOTAL FLOOR AREA = 1969 ft²



Note : • Subject to variations, modifications and substitutions as may be required by the Authorities or recommended by Architect or Engineer.
• Subject to the final survey by the licensed land surveyor.

BLOCK B1

TYPE D

FLOOR AREA
UNIT = 1521 ft²



LEVEL 1, 8, 9

BALCONY = 328 ft²
TOTAL FLOOR AREA = 1849 ft²

LEVEL 2, 7, 10

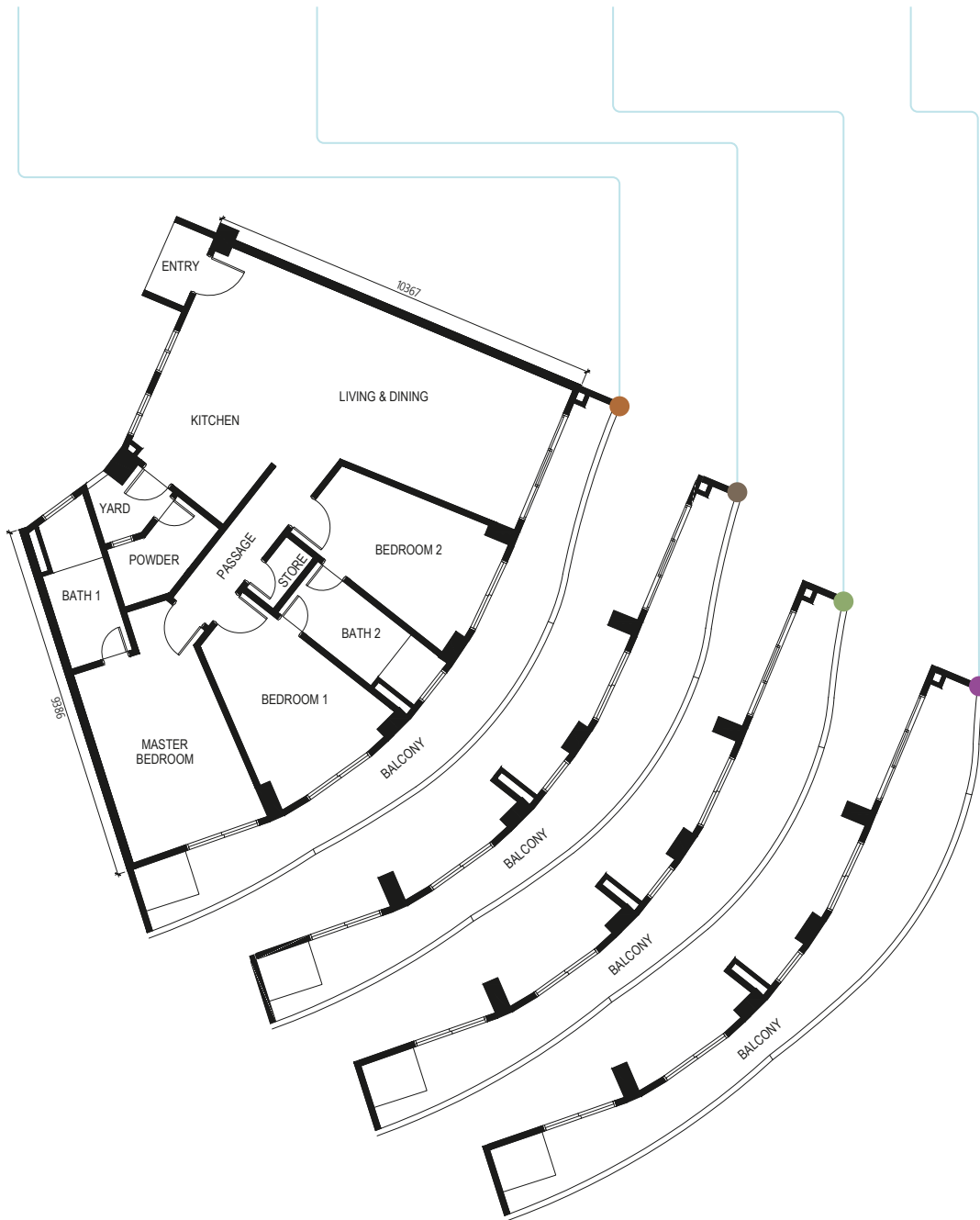
BALCONY = 339 ft²
TOTAL FLOOR AREA = 1860 ft²

LEVEL 3, 6, 11

BALCONY = 351 ft²
TOTAL FLOOR AREA = 1872 ft²

LEVEL 3A, 5

BALCONY = 361 ft²
TOTAL FLOOR AREA = 1882 ft²



Note : • Subject to variations, modifications and substitutions as may be required by the Authorities or recommended by Architect or Engineer.
• Subject to the final survey by the licensed land surveyor.

BLOCK B1

TYPE E

FLOOR AREA
UNIT = 1178 ft²



LEVEL 1, 8, 9

BALCONY = 343 ft²

TOTAL FLOOR AREA = 1521 ft²

LEVEL 2, 7, 10

BALCONY = 328 ft²

TOTAL FLOOR AREA = 1506 ft²

LEVEL 3, 6, 11

BALCONY = 306 ft²

TOTAL FLOOR AREA = 1484 ft²

LEVEL 3A, 5

BALCONY = 278 ft²

TOTAL FLOOR AREA = 1456 ft²



Note :
 • Subject to variations, modifications and substitutions as may be required by the Authorities or recommended by Architect or Engineer.
 • Subject to the final survey by the licensed land surveyor.

BLOCK B1

TYPE F

FLOOR AREA

UNIT = 1388 ft²



LEVEL 1, 8, 9

BALCONY = 438 ft²

TOTAL FLOOR AREA = 1826 ft²

LEVEL 2, 7, 10

BALCONY = 379 ft²

TOTAL FLOOR AREA = 1767 ft²

LEVEL 3, 6, 11

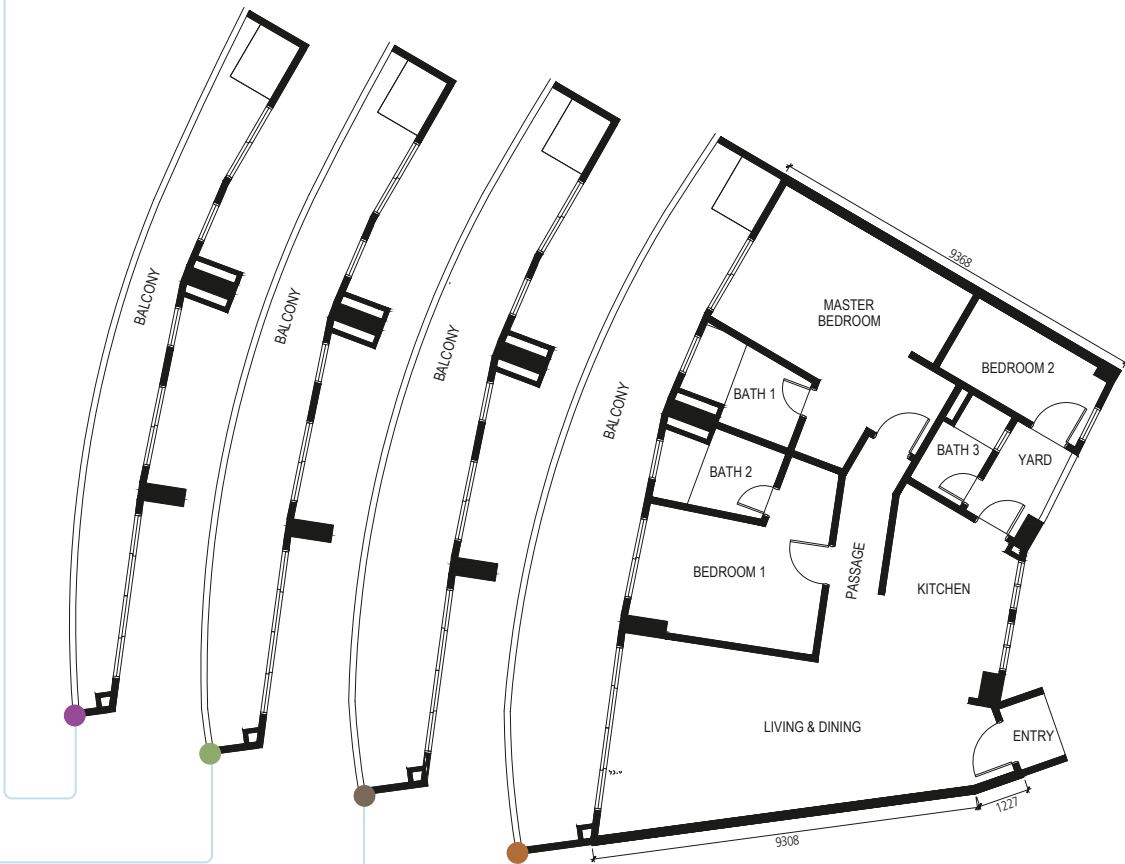
BALCONY = 323 ft²

TOTAL FLOOR AREA = 1711 ft²

LEVEL 3A, 5

BALCONY = 270 ft²

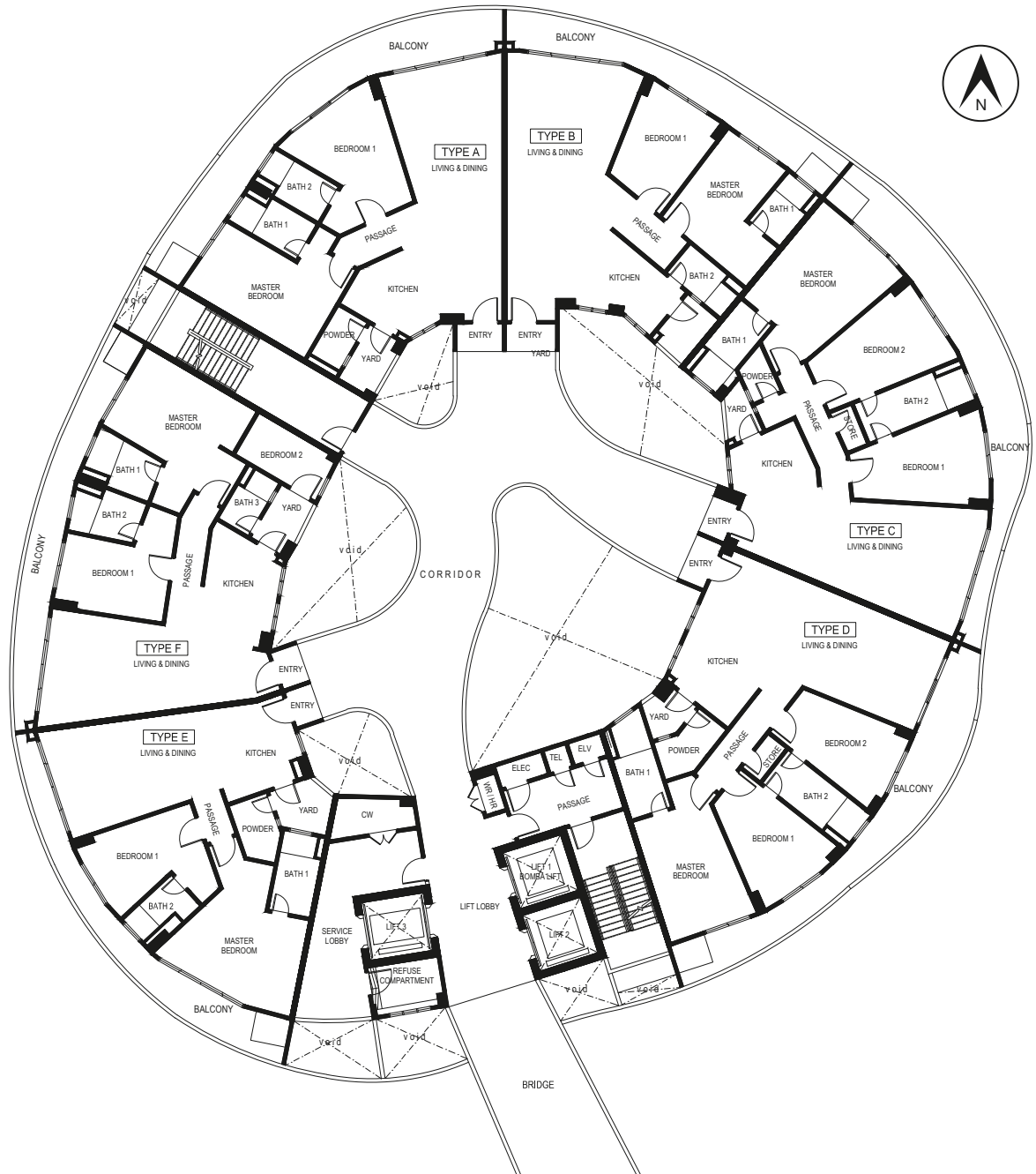
TOTAL FLOOR AREA = 1658 ft²



Note :
 • Subject to variations, modifications and substitutions as may be required by the Authorities or recommended by Architect or Engineer.
 • Subject to the final survey by the licensed land surveyor.

BLOCK B1

LEVEL 5 FLOOR PLAN



Note : • Subject to variations, modifications and substitutions as may be required by the Authorities or recommended by Architect or Engineer.
• Subject to the final survey by the licensed land surveyor.