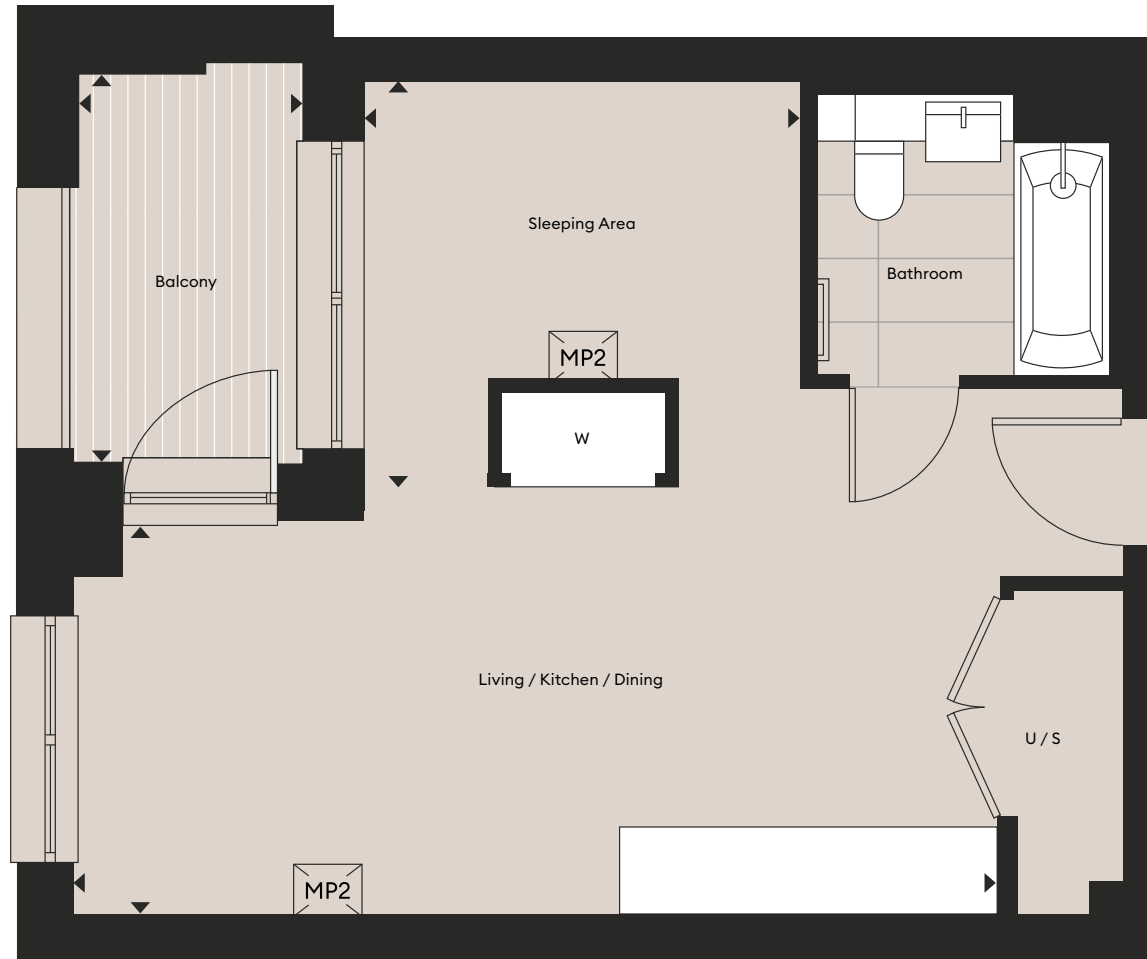


Manhattan apartment

TYPE E

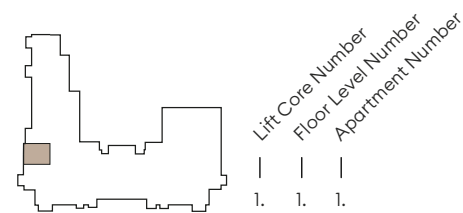


Scan to view the view from the 7th floor



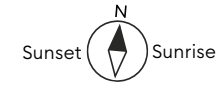
Apartment	2.6.3 / 2.7.1	
Living / Kitchen / Dining	6.81 x 2.89m	22'4" x 9'6"
Sleeping Area	3.21 x 3.23m	10'6" x 10'7"
Balcony	2.86 x 1.72m	9'5" x 5'8"
Total Net Internal Area	40.3 sq m	434 sq ft

Floorplans shown for are for approximate measurements only. Exact layout and sizes may vary. All measurements may vary within a tolerance of 5%. To increase legibility these plans have been sized to fit the page, therefore each plan may be at a different scale to others within this brochure.



KEY
W : Wardrobe
U : Utility
S : Storage

Media Plate:
- Two double switched sockets
- Two data points
- One TV SAT point

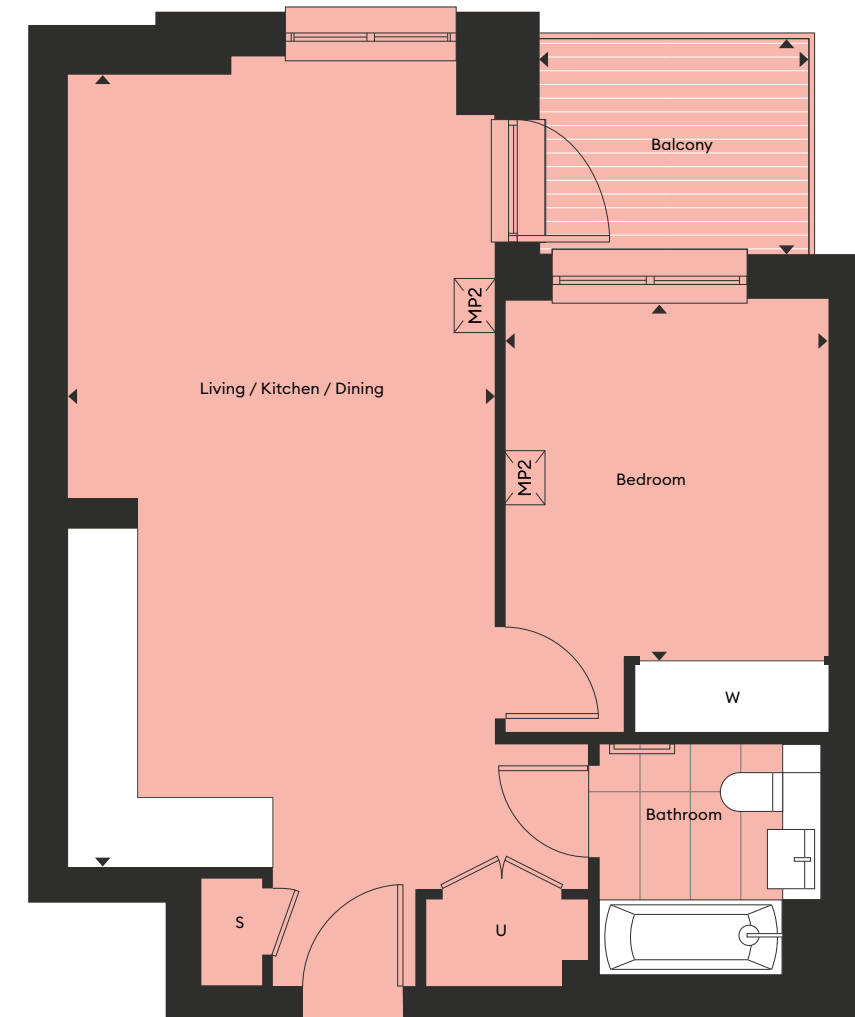


One bedroom apartment

TYPE A



Scan to view the view from the 12th floor



Apartment	2.4.8 / 2.5.8 / 2.6.8 / 2.7.5 / 3.8.4* / 2.8.5 / 2.9.5 / 2.10.5 / 2.11.5 / 2.12.5	
Living / Kitchen / Dining	3.96 x 7.36m	13'0" x 24'1"
Bedroom	2.99 x 3.32m	9'10" x 10'11"
Balcony	2.5 x 2.0m	8'2" x 6'6"
Total Net Internal Area	52.2 sq m	562 sq ft

Floorplans shown for are for approximate measurements only. Exact layout and sizes may vary. All measurements may vary within a tolerance of 5%. To increase legibility these plans have been sized to fit the page, therefore each plan may be at a different scale to others within this brochure.



KEY
W : Wardrobe
U : Utility
S : Storage

Media Plate:
- Two double switched sockets
- Two data points
- One TV SAT point

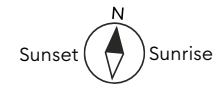
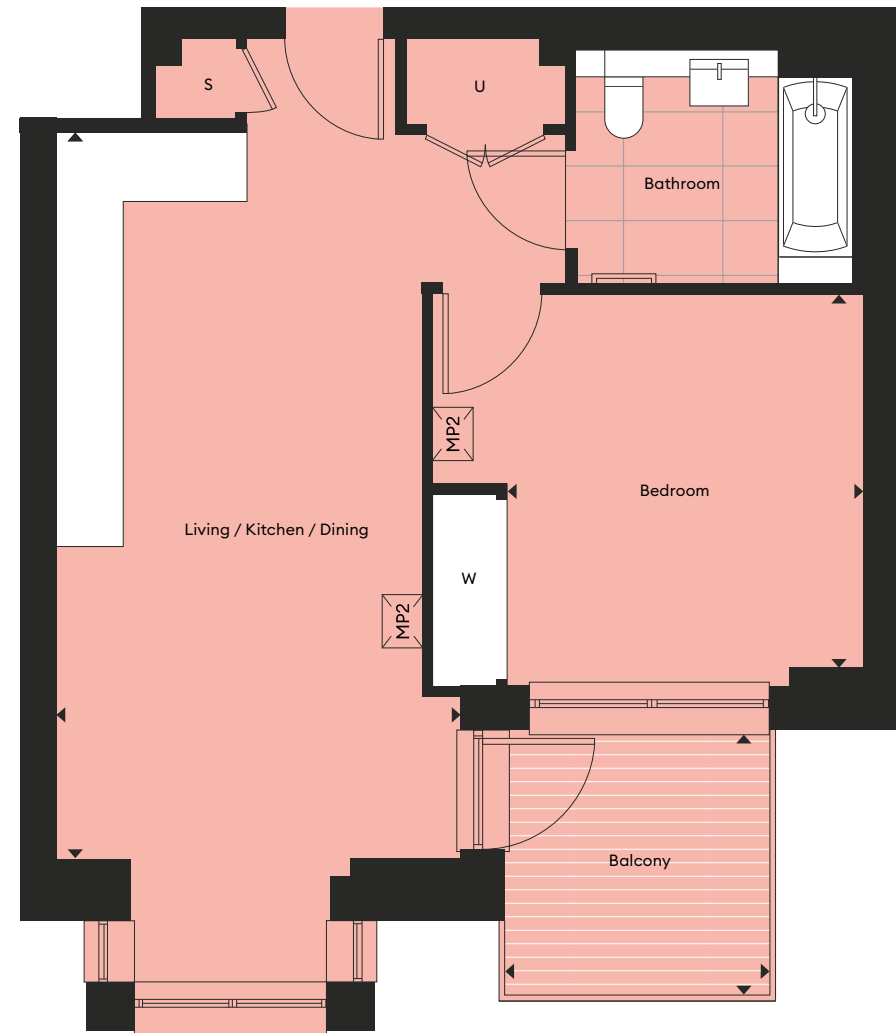


One bedroom apartment

TYPE B



Scan to view the view from the 12th floor

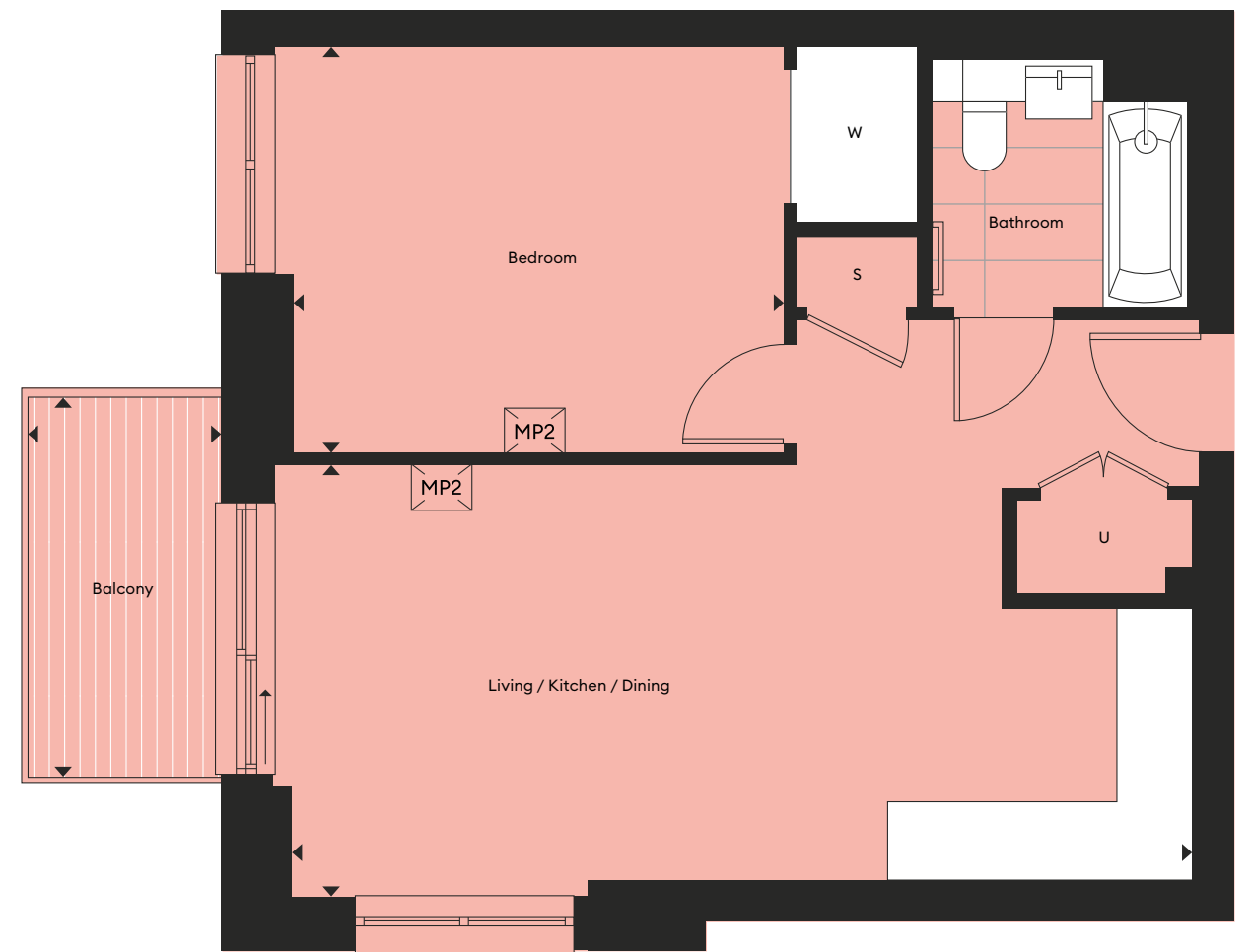


One bedroom apartment

TYPE D



Scan to view the view from the 12th floor



Apartment	2.4.6 / 2.5.6 / 2.6.6 / 2.7.4 / 2.8.4 / 2.9.4 / 2.10.4 / 2.11.4 / 2.12.4	
Living / Kitchen / Dining	3.82 x 6.84m	12'6" x 22'4"
Bedroom	3.35 x 3.51m	11'0" x 11'6"
Balcony	2.5 x 2.5m	8'2" x 8'2"
Total Net Internal Area	54 sq m	581 sq ft

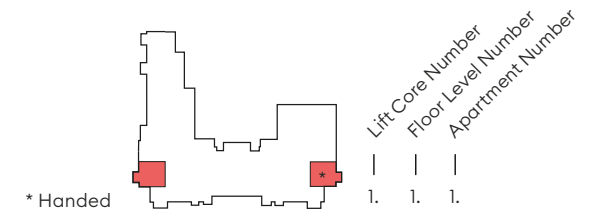


KEY
W : Wardrobe
U : Utility
S : Storage

Media Plate:
- Two double switched sockets
- Two data points
- One TV SAT point

Floorplans shown for are for approximate measurements only. Exact layout and sizes may vary. All measurements may vary within a tolerance of 5%. To increase legibility these plans have been sized to fit the page, therefore each plan may be at a different scale to others within this brochure.

Apartment	2.4.4 / 2.5.4 / 2.6.4 / 2.7.2 / 3.8.1* / 2.8.2 / 2.9.2 / 2.10.2 / 2.11.2 / 2.12.2	
Living / Kitchen / Dining	7.48 x 3.61m	24'5" x 11'8"
Bedroom	4.25 x 3.36m	13'11" x 11'10"
Balcony	3.15 x 1.6m	10'4" x 5'3"
Total Net Internal Area	53.2 sq m	572 sq ft

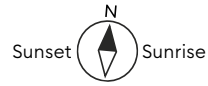


* Handed

KEY
W : Wardrobe
U : Utility
S : Storage

Media Plate:
- Two double switched sockets
- Two data points
- One TV SAT point

Floorplans shown for are for approximate measurements only. Exact layout and sizes may vary. All measurements may vary within a tolerance of 5%. To increase legibility these plans have been sized to fit the page, therefore each plan may be at a different scale to others within this brochure.

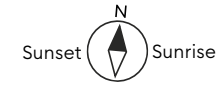
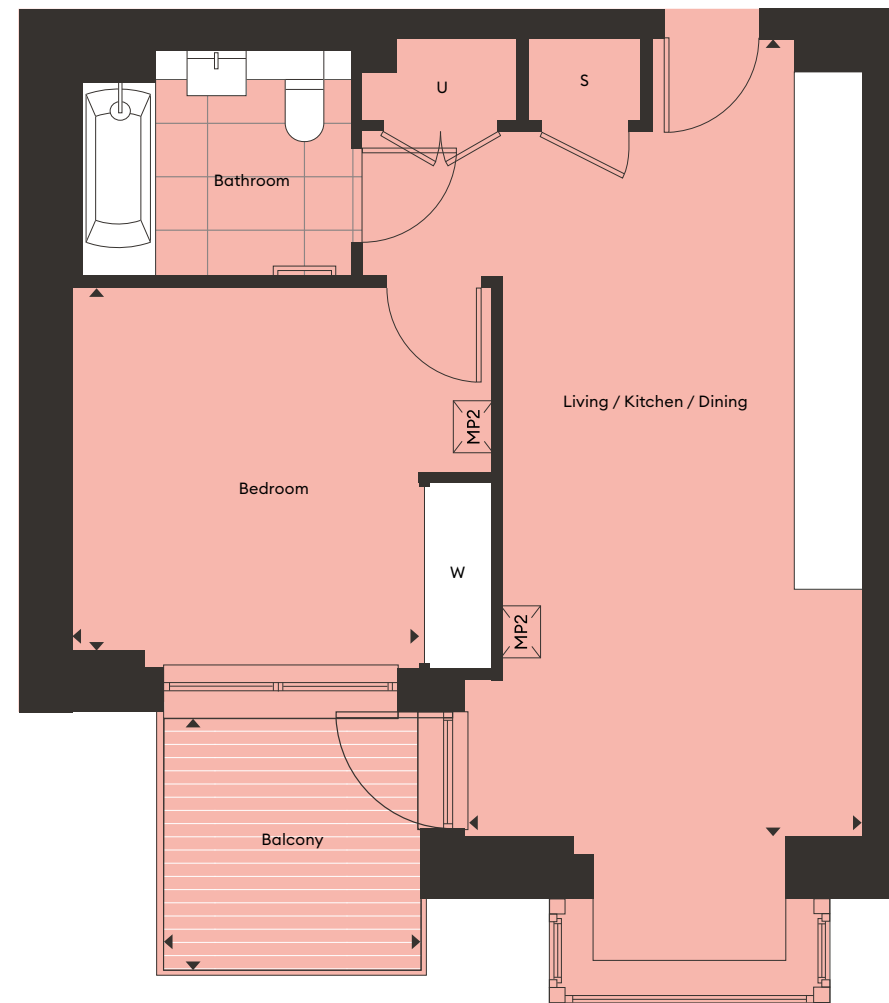


One bedroom apartment

TYPE G



Scan to view the view from the 8th floor

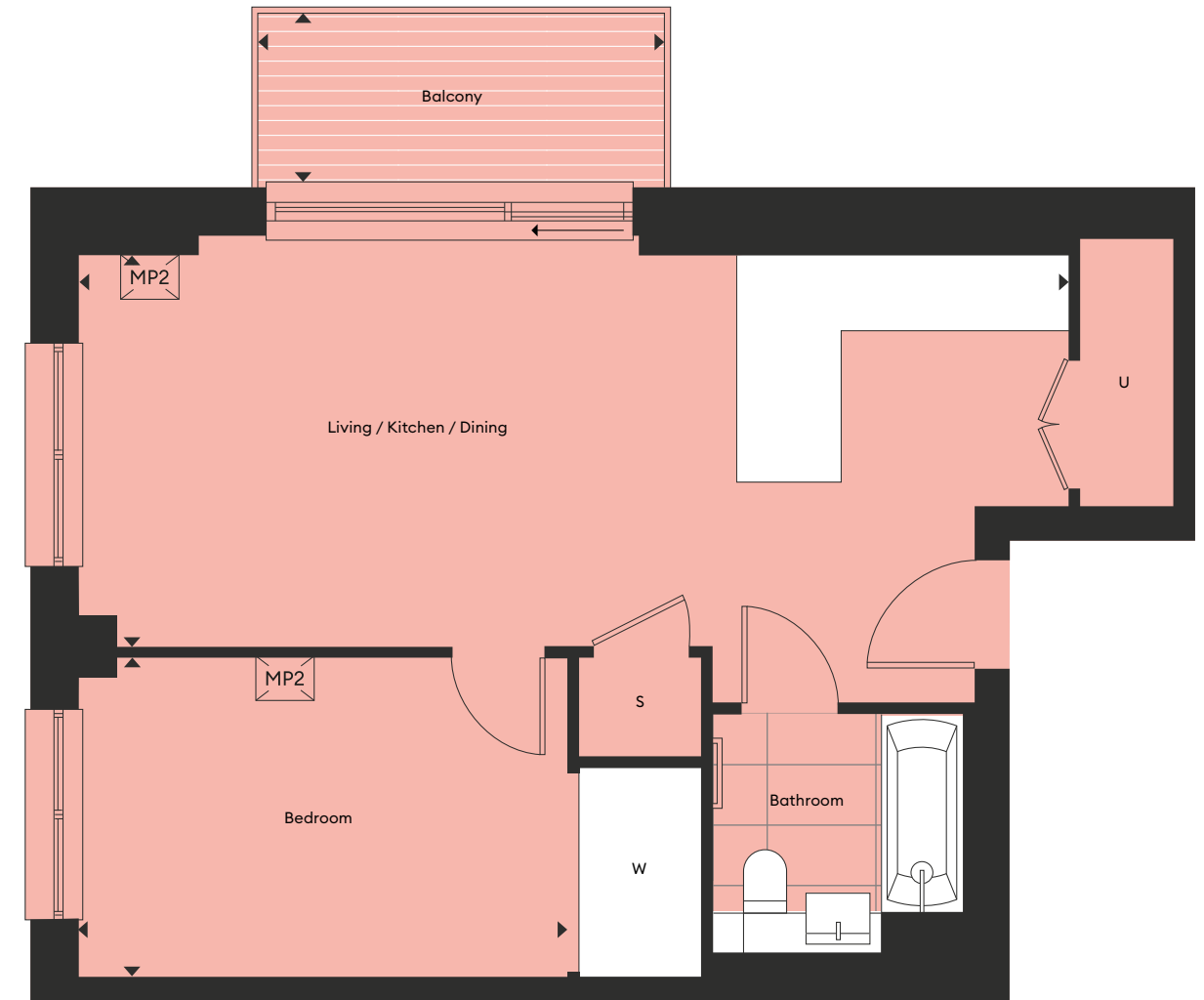


One bedroom apartment

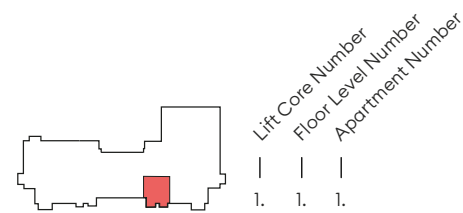
TYPE N



Scan to view the view from the 12th floor



Apartment	3.8.3	
Living / Kitchen / Dining	3.84 x 7.80m	12'7" x 25'7"
Bedroom	3.35 x 3.51m	11'0" x 11'6"
Balcony	2.5m x 2.5m	8'2" x 8'2"
Total Net Internal Area	54 sq m	581 sq ft

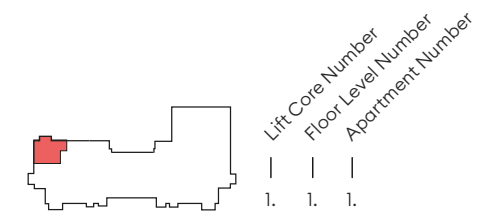


KEY
W : Wardrobe
U : Utility
S : Storage

Media Plate:
- Two double switched sockets
- Two data points
- One TV SAT point

Floorplans shown for are for approximate measurements only. Exact layout and sizes may vary. All measurements may vary within a tolerance of 5%. To increase legibility these plans have been sized to fit the page, therefore each plan may be at a different scale to others within this brochure.

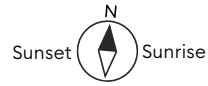
Apartment	2.8.1 / 2.9.1 / 2.10.1 / 2.11.1 / 2.12.1	
Living / Kitchen / Dining	8.52 x 3.36m	27'9" x 11'0"
Bedroom	4.20 x 2.75m	13'9" x 9'0"
Balcony	1.5 x 3.5m	4'11" x 11'6"
Total Net Internal Area	52.1 sq m	561 sq ft



KEY
W : Wardrobe
U : Utility
S : Storage

Media Plate:
- Two double switched sockets
- Two data points
- One TV SAT point

Floorplans shown for are for approximate measurements only. Exact layout and sizes may vary. All measurements may vary within a tolerance of 5%. To increase legibility these plans have been sized to fit the page, therefore each plan may be at a different scale to others within this brochure.

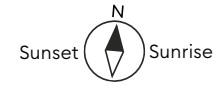


Two bedroom apartment

TYPE C



Scan to view the view from the 12th floor



Two bedroom apartment

TYPE F

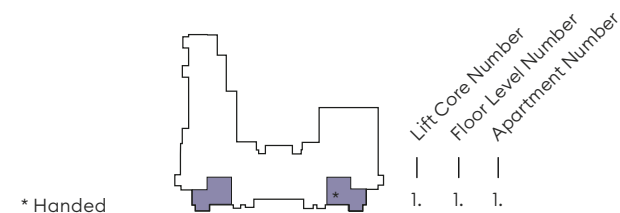


Scan to view the view from the 7th floor



Apartment	2.4.5 / 2.5.5 / 2.6.5 / 2.7.3 / 2.8.3 / 2.9.3 / 2.10.3 / 2.11.3 / 2.12.3 / 3.5.5* / 3.6.5* / 3.7.5* / 3.8.2*	
Living / Kitchen / Dining	5.72 x 4.55m	18'7" x 14'9"
Bedroom 1	2.75 x 3.0m	9'0" x 9'10"
Bedroom 2	2.75 x 4.12m	9'0" x 13'6"
Balcony	4.0 x 1.75m	13'1" x 5'9"
Total Net Internal Area	75.1 sq m	808 sq ft

Floorplans shown for are for approximate measurements only. Exact layout and sizes may vary. All measurements may vary within a tolerance of 5%. To increase legibility these plans have been sized to fit the page, therefore each plan may be at a different scale to others within this brochure.



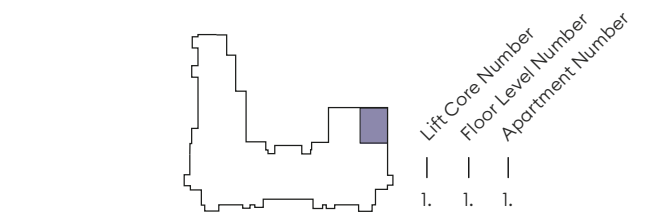
KEY
 W : Wardrobe
 U : Utility
 S : Storage
 †: Apartments 3.5.5/ 3.6.5/ 3.7.5/3.8.5 only

Indicative wardrobe position

Media Plate:
 - Two double switched sockets
 - Two data points
 - One TV SAT point

Apartment	3.5.2 / 3.6.2 / 3.7.2	
Living / Kitchen / Dining	5.49 x 4.76m	18'0" x 15'7"
Bedroom 1	5.11 x 2.75m	16'9" x 9'0"
Bedroom 2	4.09 x 2.75m	13'5" x 9'0"
Balcony	1.72 x 4.0m	5'8" x 13'5"
Total Net Internal Area	71.7 sq m	772 sq ft

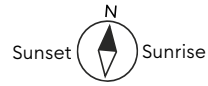
Floorplans shown for are for approximate measurements only. Exact layout and sizes may vary. All measurements may vary within a tolerance of 5%. To increase legibility these plans have been sized to fit the page, therefore each plan may be at a different scale to others within this brochure.



KEY
 W : Wardrobe
 U : Utility
 S : Storage

Indicative wardrobe position

Media Plate:
 - Two double switched sockets
 - Two data points
 - One TV SAT point

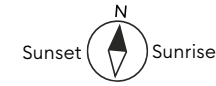
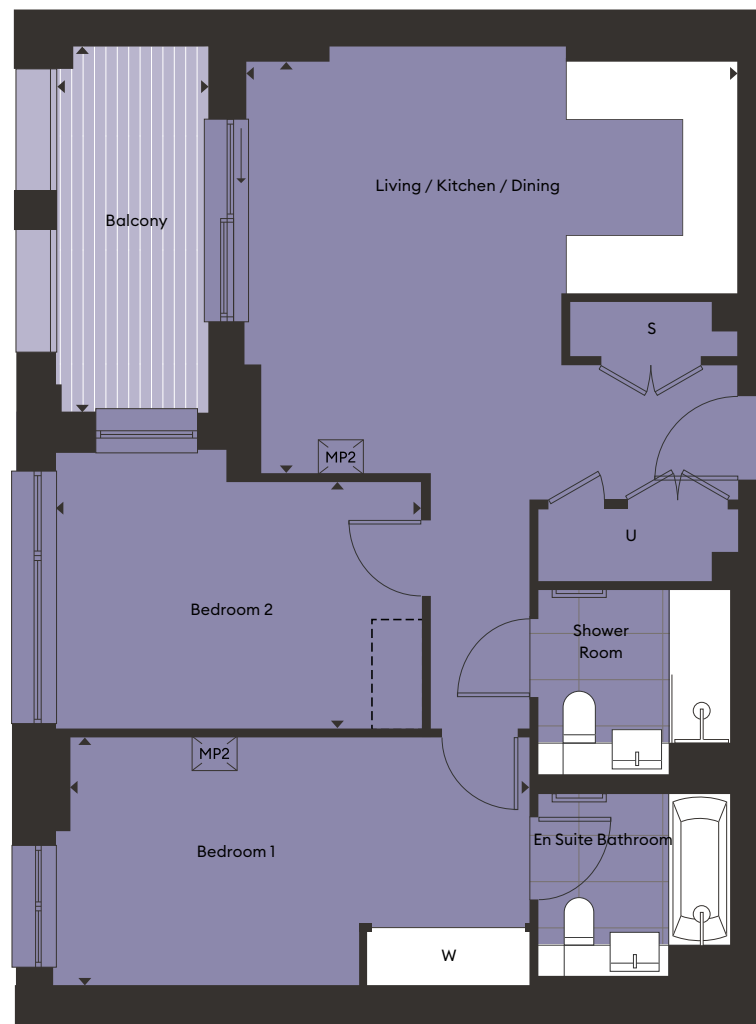


Two bedroom apartment

TYPE F1



Scan to view the view from the 8th floor

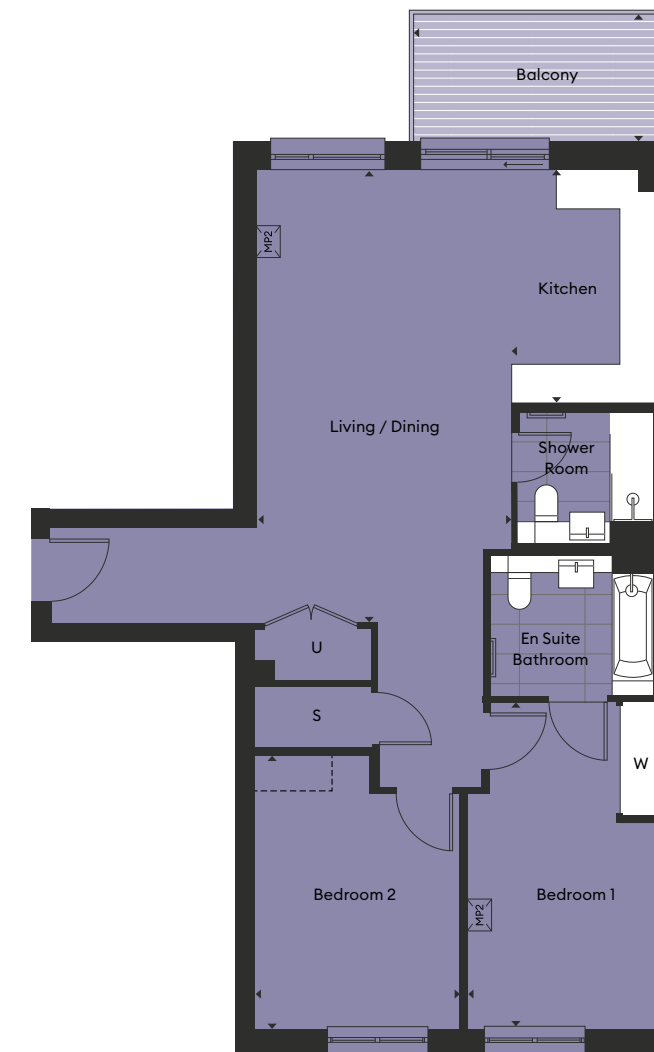


Two bedroom apartment

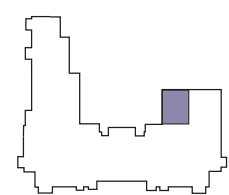
TYPE H



Scan to view the view from the 5th floor



Apartment	3.51 / 3.61 / 3.71 / 3.8.5	
Living / Kitchen / Dining	5.53 x 4.61m	18'1" x 15'1"
Bedroom 1	5.14 x 2.77m	16'10" x 9'1"
Bedroom 2	4.12 x 2.75m	13'6" x 9'0"
Balcony	1.72 x 4.0m	5'8" x 13'5"
Total Net Internal Area	70 sq m	754 sq ft



Lift Core Number
Floor Level Number
Apartment Number
1. 1. 1.

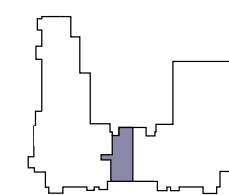
KEY
W : Wardrobe
U : Utility
S : Storage

Indicative wardrobe position

MP2
Media Plate:
- Two double switched sockets
- Two data points
- One TV SAT point

Floorplans shown for are for approximate measurements only. Exact layout and sizes may vary. All measurements may vary within a tolerance of 5%. To increase legibility these plans have been sized to fit the page, therefore each plan may be at a different scale to others within this brochure.

Apartment	2.4.7 / 2.5.7	
Living / Dining	7.16 x 4.03m	23'6" x 13'3"
Kitchen	3.70 x 2.30m	12'2" x 7'9"
Bedroom 1	5.14 x 3.05m	16'10" x 10'0"
Bedroom 2	3.70 x 3.24m	12'1" x 10'7"
Balcony	4.0 x 2.0m	13'1" x 6'6"
Total Net Internal Area	91.5 sq m	985 sq ft



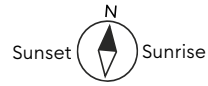
Lift Core Number
Floor Level Number
Apartment Number
1. 1. 1.

KEY
W : Wardrobe
U : Utility
S : Storage

Indicative wardrobe position

MP2
Media Plate:
- Two double switched sockets
- Two data points
- One TV SAT point

Floorplans shown for are for approximate measurements only. Exact layout and sizes may vary. All measurements may vary within a tolerance of 5%. To increase legibility these plans have been sized to fit the page, therefore each plan may be at a different scale to others within this brochure.



Two bedroom apartment

TYPE K

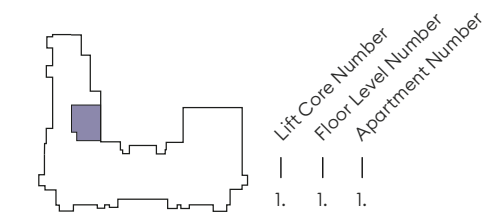


Scan to view the view from the 6th floor



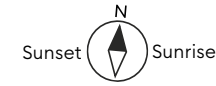
Apartment	2.4.1 / 2.5.1 / 2.6.1	
Living / Dining	6.30 x 3.47m	20'6" x 11'4"
Kitchen	2.82 x 2.30m	9'3" x 7'7"
Bedroom 1	3.64 x 3.0m	11'11" x 9'10"
Bedroom 2	3.33 x 3.0m	10'11" x 9'10"
Balcony	1.83 x 4.0m	6'0" x 13'4"
Total Net Internal Area	79.4 sq m	855 sq ft

Floorplans shown for are for approximate measurements only. Exact layout and sizes may vary. All measurements may vary within a tolerance of 5%. To increase legibility these plans have been sized to fit the page, therefore each plan may be at a different scale to others within this brochure.



KEY
 W : Wardrobe
 U : Utility
 S : Storage

Media Plate:
 - Two double switched sockets
 - Two data points
 - One TV SAT point

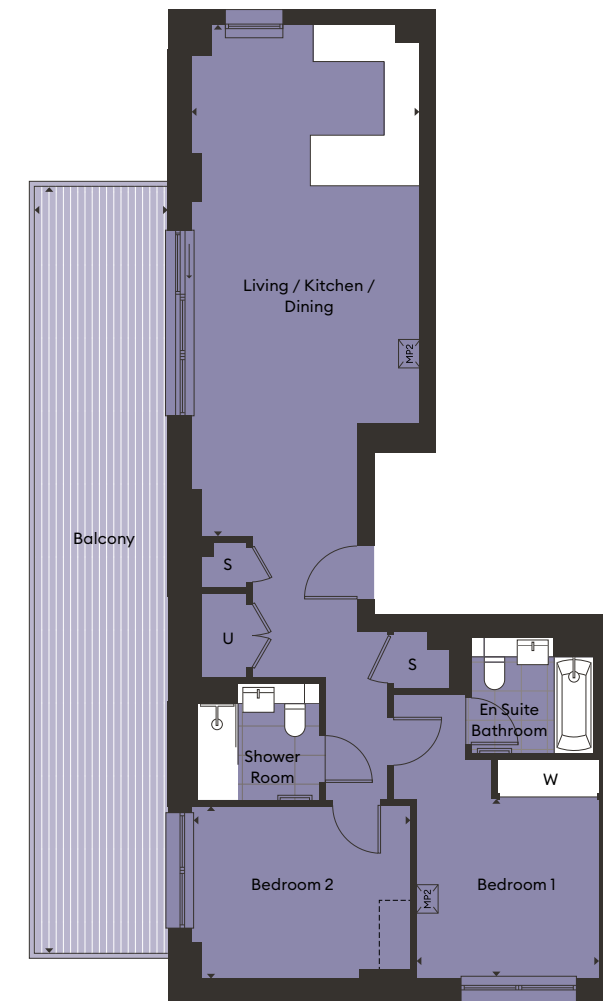


Two bedroom apartment

TYPE R

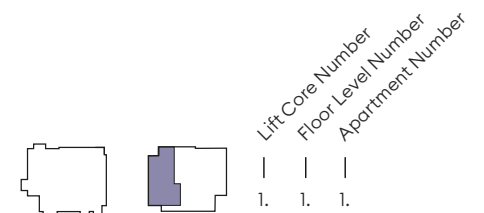


Scan to view the view from the 10th floor



Apartment	3.10.2	
Living / Kitchen / Dining	9.02 x 4.04m	29'7" x 13'2"
Bedroom 1	3.16 x 3.22m	10'3" x 10'7"
Bedroom 2	3.03 x 3.86m	9'11" x 12'8"
Balcony	2.4 x 13.7m	8'0" x 44'11"
Total Net Internal Area	83 sq m	893 sq ft

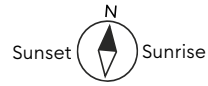
Floorplans shown for are for approximate measurements only. Exact layout and sizes may vary. All measurements may vary within a tolerance of 5%. To increase legibility these plans have been sized to fit the page, therefore each plan may be at a different scale to others within this brochure.



KEY
 W : Wardrobe
 U : Utility
 S : Storage

Media Plate:
 - Two double switched sockets
 - Two data points
 - One TV SAT point



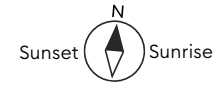


Two bedroom apartment

TYPE T



Scan to view the view from the 6th floor

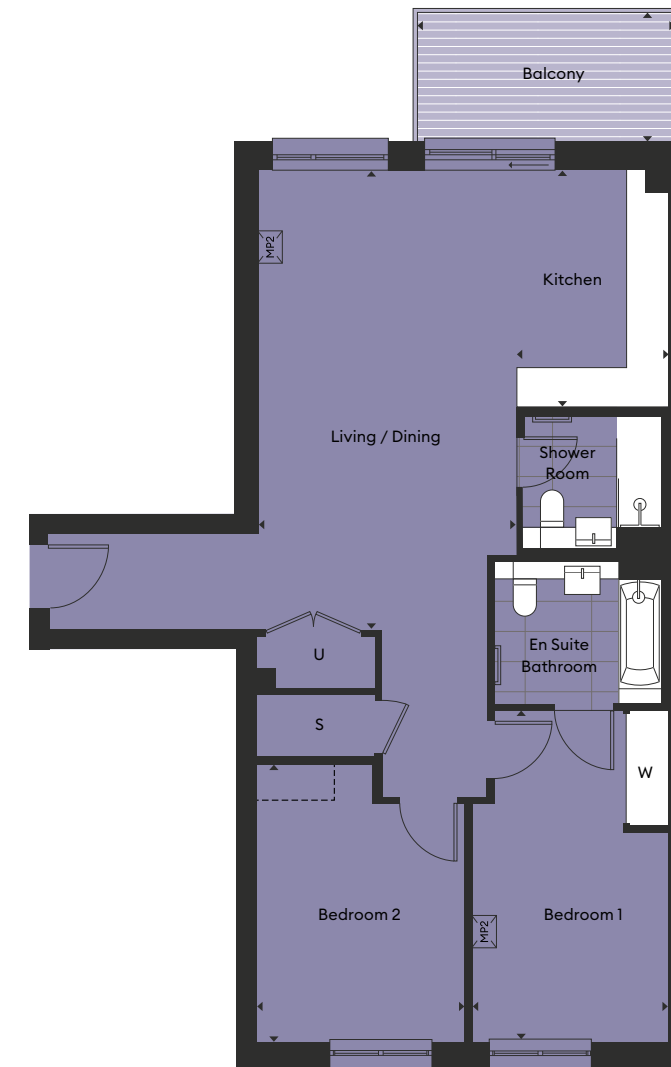


Two bedroom apartment

TYPE U



Scan to view the view from the 7th floor



Apartment	2.5.2 / 2.6.2	
Living / Kitchen / Dining	5.24 x 4.53m	17'1" x 14'11"
Bedroom 1	3.21 x 2.97m	10'6" x 9'7"
Bedroom 2	3.47 x 2.88m	11'3" x 9'5"
Balcony	4.0 x 1.5m	13'1" x 4'11"
Total Net Internal Area	62.3 sq m	671 sq ft



KEY
 W : Wardrobe
 U : Utility
 S : Storage

Indicative wardrobe position

MP2
Media Plate:
 - Two double switched sockets
 - Two data points
 - One TV SAT point

Floorplans shown for are for approximate measurements only. Exact layout and sizes may vary. All measurements may vary within a tolerance of 5%. To increase legibility these plans have been sized to fit the page, therefore each plan may be at a different scale to others within this brochure.

Apartment	2.6.7 / 2.7.6	
Living / Dining	7.16 x 4.03m	23'6" x 13'3"
Kitchen	3.70 x 2.30m	12'2" x 7'9"
Bedroom 1	5.29 x 3.05m	17'4" x 10'0"
Bedroom 2	4.30 x 3.24m	14'1" x 10'7"
Balcony	4.0 x 2.0m	13'1" x 6'6"
Total Net Internal Area	91.5 sq m	985 sq ft

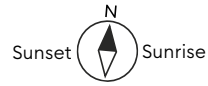


KEY
 W : Wardrobe
 U : Utility
 S : Storage

Indicative wardrobe position

MP2
Media Plate:
 - Two double switched sockets
 - Two data points
 - One TV SAT point

Floorplans shown for are for approximate measurements only. Exact layout and sizes may vary. All measurements may vary within a tolerance of 5%. To increase legibility these plans have been sized to fit the page, therefore each plan may be at a different scale to others within this brochure.

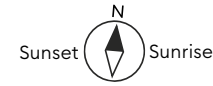
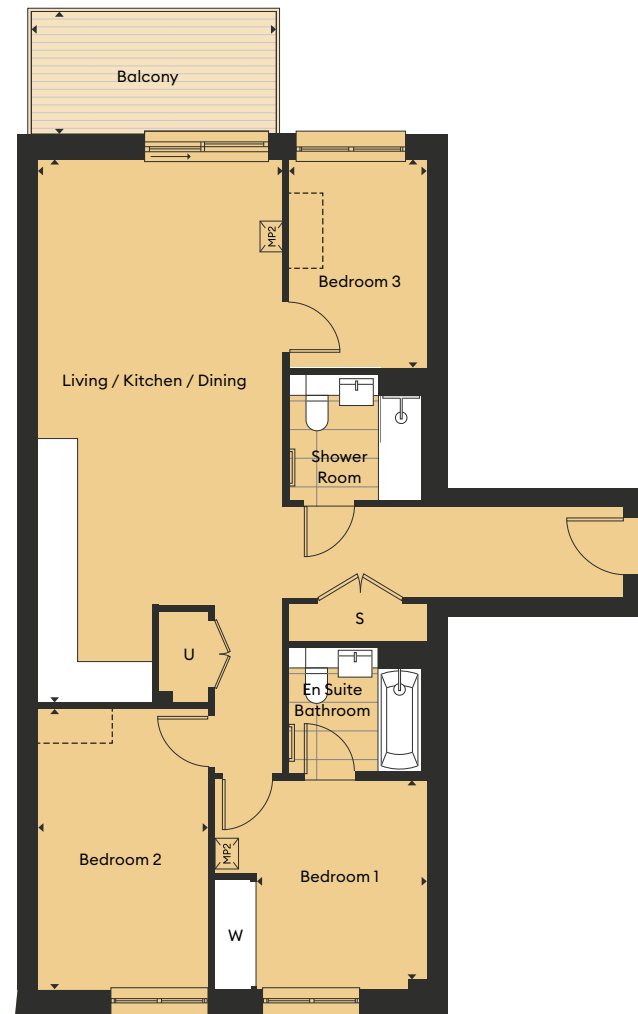


Three bedroom apartment

TYPE I



Scan to view the view from the 7th floor

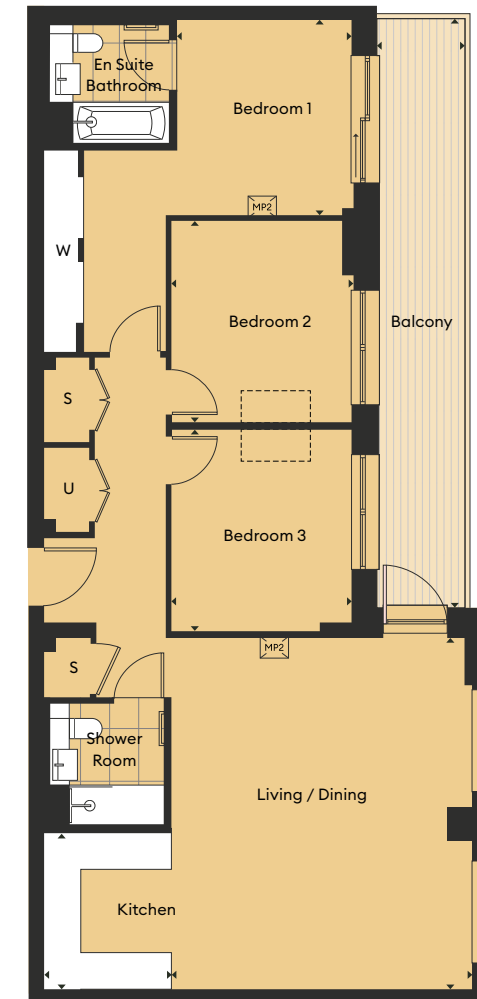


Three bedroom apartment

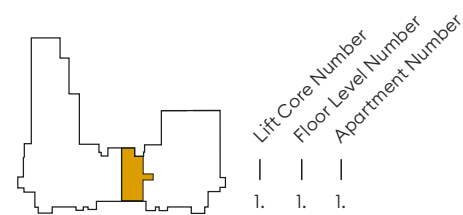
TYPE M



Scan to view the view from the 8th floor



Apartment	3.5.7 / 3.6.7 / 3.7.7	
Living / Kitchen / Dining	4.00 x 8.87m	13'1" x 29'1"
Bedroom 1	3.26 x 2.77m	10'8" x 9'08"
Bedroom 2	4.58 x 2.77m	15'0" x 9'0"
Bedroom 3	3.40 x 2.25m	11'1" x 7'3"
Balcony	2.0 x 4.0m	6'6" x 13'1"
Total Net Internal Area	91 sq m	980 sq ft

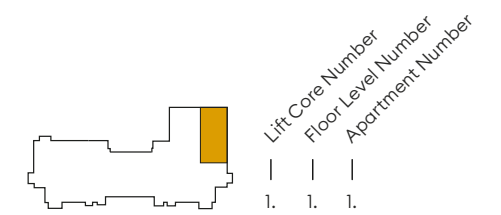


KEY
W : Wardrobe
U : Utility
S : Storage

Indicative wardrobe position

MP2
Media Plate:
- Two double switched sockets
- Two data points
- One TV SAT point

Apartment	3.8.6	
Living / Dining	6.23m x 5.36m	20'5" x 17'7"
Kitchen	2.25m x 2.72m	7'5" x 8'11"
Bedroom 1	3.45 x 3.13m	11'4" x 10'3"
Bedroom 2	3.60 x 3.23m	11'9" x 10'5"
Bedroom 3	3.65 x 3.23m	11'11" x 10'5"
Balcony	1.65 x 10.54m	5'5" x 34'7"
Total Net Internal Area	108 sq m	1,163 sq ft

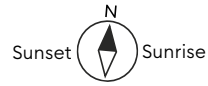


Floorplans shown for are for approximate measurements only. Exact layout and sizes may vary. All measurements may vary within a tolerance of 5%. To increase legibility these plans have been sized to fit the page, therefore each plan may be at a different scale to others within this brochure.

KEY
W : Wardrobe
U : Utility
S : Storage

Indicative wardrobe position

MP2
Media Plate:
- Two double switched sockets
- Two data points
- One TV SAT point

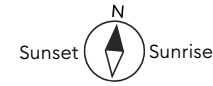


Three bedroom apartment

TYPE O



Scan to view the view from the 16th floor

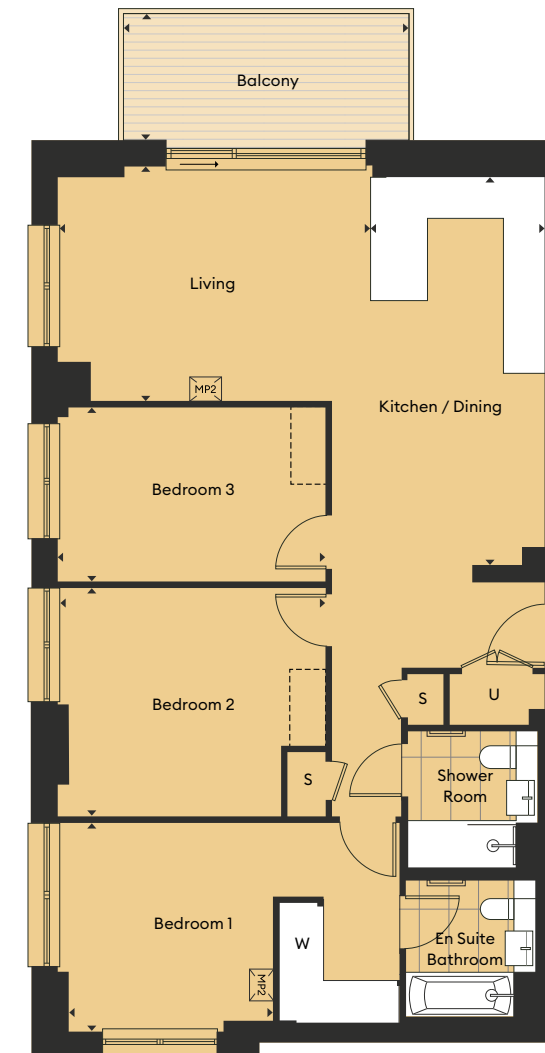


Three bedroom apartment

TYPE P



Scan to view the view from the 16th floor

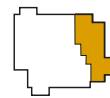


Apartment	3.9.3* / 2.13.3 / 2.14.3 / 2.15.3 / 2.16.3	
Living / Kitchen / Dining	8.26 x 3.63m	27'0" x 11'9"
Bedroom 1	3.13 x 3.98m	10'3" x 13'0"
Bedroom 2	3.57 x 2.76m	11'8" x 9'1"
Bedroom 3	2.30 x 3.63m	7'6" x 11'9"
Balcony	2.0 x 4.50m	6'6" x 14'9"

Total Net Internal Area **87.9** sq m **946** sq ft

Floorplans shown for are for approximate measurements only. Exact layout and sizes may vary. All measurements may vary within a tolerance of 5%. To increase legibility these plans have been sized to fit the page, therefore each plan may be at a different scale to others within this brochure.

* Handed



Indicative wardrobe position



Media Plate:
- Two double switched sockets
- Two data points
- One TV SAT point

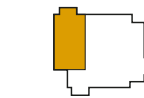
Lift Core Number	1.
Floor Level Number	1.
Apartment Number	1.

Apartment	2.13.1 / 2.14.1 / 2.15.1 / 2.16.1	
Living	4.92 x 3.70m	16'1" x 12'2"
Kitchen / Dining	1.22 x 5.97m	4'0" x 19'7"
Bedroom 1	3.23 x 3.29m	10'7" x 10'9"
Bedroom 2	4.23 x 3.60m	13'10" x 11'7"
Bedroom 3	4.23 x 2.75m	13'10" x 9'0"
Balcony	2.0 x 4.50m	6'6" x 14'9"

Total Net Internal Area **103.3** sq m **1,112** sq ft

Floorplans shown for are for approximate measurements only. Exact layout and sizes may vary. All measurements may vary within a tolerance of 5%. To increase legibility these plans have been sized to fit the page, therefore each plan may be at a different scale to others within this brochure.

KEY
W : Wardrobe
U : Utility
S : Storage

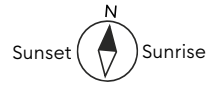


Indicative wardrobe position



Media Plate:
- Two double switched sockets
- Two data points
- One TV SAT point

Lift Core Number	1.
Floor Level Number	1.
Apartment Number	1.

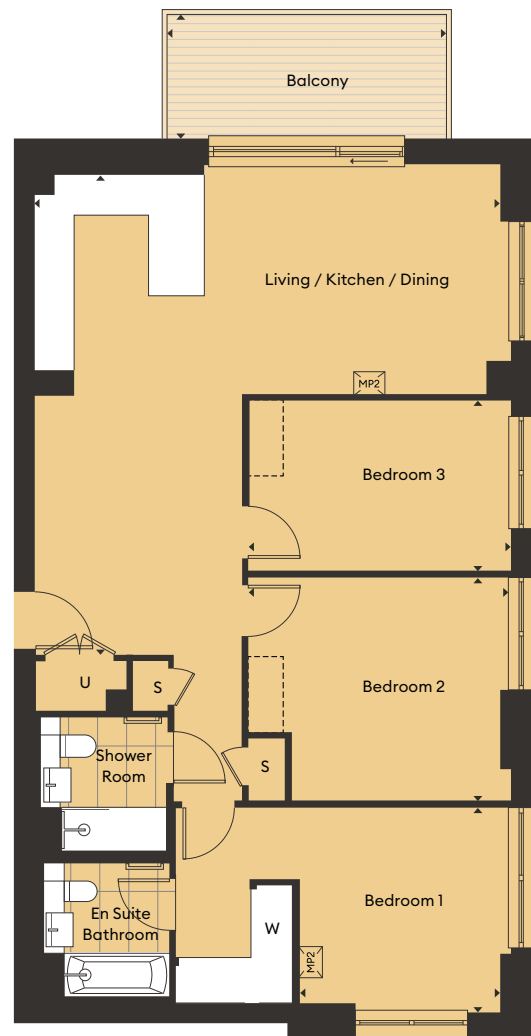


Three bedroom apartment

TYPE P1



Scan to view the view from the 9th floor



Apartment	3.9,1	
Living / Kitchen / Dining	7.52 x 7.73m	24'6" x 25'4"
Bedroom 1	3.23 x 3.29m	10'7" x 10'10"
Bedroom 2	4.23 x 3.60m	13'10" x 11'10"
Bedroom 3	4.23 x 2.75m	13'10" x 9'0"
Balcony	2.0 x 4.50m	6'6" x 14'9"
Total Net Internal Area	103 sq m	1,109 sq ft

Floorplans shown for are for approximate measurements only. Exact layout and sizes may vary. All measurements may vary within a tolerance of 5%. To increase legibility these plans have been sized to fit the page, therefore each plan may be at a different scale to others within this brochure.

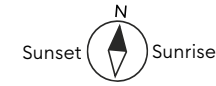
KEY
W : Wardrobe
U : Utility
S : Storage

Indicative wardrobe position

Media Plate:
- Two double switched sockets
- Two data points
- One TV SAT point

MP2

Lift Core Number
Floor Level Number
Apartment Number



Three bedroom apartment

TYPE Q



Scan to view the view from the 16th floor



Apartment	2.13.2 / 2.14.2 / 2.15.2 / 2.16.2	
Kitchen	2.50 x 3.33m	8'2" x 10'11"
Living / Dining	6.32 x 4.55m	20'9" x 14'11"
Bedroom 1	3.40 x 3.36m	11'2" x 11'0"
Bedroom 2	2.80 x 4.22m	9'2" x 13'10"
Bedroom 3	2.75 x 4.22m	9'0" x 13'10"
Balcony	2.0 x 4.50m	6'6" x 14'9"
Total Net Internal Area	105 sq m	1,130 sq ft

Floorplans shown for are for approximate measurements only. Exact layout and sizes may vary. All measurements may vary within a tolerance of 5%. To increase legibility these plans have been sized to fit the page, therefore each plan may be at a different scale to others within this brochure.

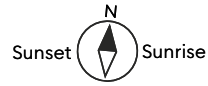
KEY
W : Wardrobe
U : Utility
S : Storage

Indicative wardrobe position

Media Plate:
- Two double switched sockets
- Two data points
- One TV SAT point

MP2

Lift Core Number
Floor Level Number
Apartment Number



Three bedroom apartment

TYPE Q1



Scan to view the view from the 9th floor



Apartment	3.9.2	
Kitchen	2.50 x 3.33m	8'2" x 10'11"
Living / Dining	6.32 x 4.55m	20'9" x 14'11"
Bedroom 1	3.40 x 3.36m	11'2" x 11'0"
Bedroom 2	2.80 x 4.21m	9'2" x 13'10"
Bedroom 3	2.75 x 4.21m	9'0" x 13'10"
Balcony	2.0 x 4.50m	6'6" x 14'9"
Total Net Internal Area	105 sq m	1,130 sq ft

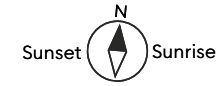
Floorplans shown for are for approximate measurements only. Exact layout and sizes may vary. All measurements may vary within a tolerance of 5%. To increase legibility these plans have been sized to fit the page, therefore each plan may be at a different scale to others within this brochure.

KEY
 W : Wardrobe
 U : Utility
 S : Storage

Indicative wardrobe position

MP2
 Media Plate:
 - Two double switched sockets
 - Two data points
 - One TV SAT point

Lift Core Number
 Floor Level Number
 Apartment Number
 1. 1. 1.



Three bedroom apartment

TYPE S



Scan to view the view from the 10th floor



Apartment	3.10.1	
Living / Kitchen / Dining	7.61 x 5.70m	25'0" x 18'7"
Bedroom 1	3.17 x 2.95m	10'5" x 9'8"
Bedroom 2	2.96 x 3.86m	9'8" x 12'8"
Bedroom 3	2.85 x 3.57m	9'4" x 11'8"
Balcony	2.94 x 13.0m	9'8" x 42'9"
Total Net Internal Area	96.2 sq m	1,035 sq ft

Floorplans shown for are for approximate measurements only. Exact layout and sizes may vary. All measurements may vary within a tolerance of 5%. To increase legibility these plans have been sized to fit the page, therefore each plan may be at a different scale to others within this brochure.

KEY
 W : Wardrobe
 U : Utility
 S : Storage

Indicative wardrobe position

MP2
 Media Plate:
 - Two double switched sockets
 - Two data points
 - One TV SAT point

Lift Core Number
 Floor Level Number
 Apartment Number
 1. 1. 1.